

# AVONTUURA (<https://www.avontuura.com/>)

The architect's guide to travel and adventure



ARCHITECTURE ([HTTPS://WWW.AVONTUURA.COM/CATEGORY/ARCHITECTURE-DESIGN/](https://www.avontuura.com/category/architecture-design/))

## Swiss Embassy in Nairobi Reflects Local “Coffee Soil“

By Karl van Es (<https://www.avontuura.com/author/karlvanes/>) / September 14, 2018 (<https://www.avontuura.com/swiss-embassy-in-nairobi-by-roeoesli-maeder/>) / [Leave a comment \(https://www.avontuura.com/swiss-embassy-in-nairobi-by-roeoesli-maeder/#respond\)](https://www.avontuura.com/swiss-embassy-in-nairobi-by-roeoesli-maeder/#respond)



© Iwan Baan

### SWISS EMBASSY IN NAIROBI | ROEOESLI & MAEDER ARCHITEKTEN (<https://www.roeoesli-maeder.ch/>)

Nairobi, Kenya

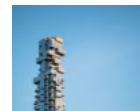
*Description provided by roeoesli & maeder architekten.* The New Swiss Embassy in the Kenyan Capital of Nairobi, designed by Lucerne-based architects ro.ma (roeoesli & maeder gmbh, dipl. archi-tekten eth bsa), is an architecturally superior building that represents Switzerland (<https://www.avontuura.com/category/must-see-city-guides/europe/switzerland/>) in an appropriate way. At the same time, it incorporates local building practices and local companies and manages to bring together the required aspects of functionality, safety, and sustainability in a coherent spatial structure.

#### FEATURED CITY GUIDES



MUST-SEE ARCHITECTURE: COPENHAGEN (<https://www.avontuura.com/must-see-architecture-in-copenhagen/>)

(<https://www.avontuura.com/must-see-architecture-in-copenhagen/>)



MUST-SEE: CONTEMPORARY NEW YORK (<https://www.avontuura.com/must-see-contemporary-new-york/>)

(<https://www.avontuura.com/must-see-contemporary-new-york/>)



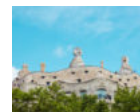
MUST-SEE: LOS ANGELES (<https://www.avontuura.com/must-see-los-angeles/>)

July 21, 2017



MUST-SEE: TOKYO (<https://www.avontuura.com/must-see-tokyo/>)

July 4, 2017



MUST-SEE: BARCELONA (<https://www.avontuura.com/must-see-barcelona/>)

June 23, 2017



MUST-SEE: PARIS (<https://www.avontuura.com/must-see-new-paris/>)

June 14, 2017



MUST-SEE: MEXICO CITY (<https://www.avontuura.com/must-see-mexico-city/>)

June 6, 2017



MUST-SEE: LONDON (<https://www.avontuura.com/must-see-contemporary-london/>)

June 3, 2017



MUST-SEE: SHANGHAI (<https://www.avontuura.com/shanghai/>)

May 28, 2017



MUST-SEE ARCHITECTURE: AMSTERDAM (<https://www.avontuura.com/must-see-architecture-in-amsterdam/>)

(<https://www.avontuura.com/must-see-architecture-in-amsterdam/>)



© Iwan Baan



© Iwan Baan

By allowing the actual building to grow out of the enclosing wall (required for compound security), a spiral spatial relationship is created that frames the entire compound, culminating in the central two-storey structure.

## TAGS

- [apartment \(https://www.avontuura.com/tag/apartment/\)](https://www.avontuura.com/tag/apartment/)
- [architecture \(https://www.avontuura.com/tag/architecture/\)](https://www.avontuura.com/tag/architecture/)
- [BIG \(https://www.avontuura.com/tag/big/\)](https://www.avontuura.com/tag/big/)
- [Bjarke Ingels Group \(https://www.avontuura.com/tag/bjarke-ingels-group/\)](https://www.avontuura.com/tag/bjarke-ingels-group/)
- [cabin \(https://www.avontuura.com/tag/cabin/\)](https://www.avontuura.com/tag/cabin/)
- [china \(https://www.avontuura.com/tag/china/\)](https://www.avontuura.com/tag/china/)
- [copenhagen \(https://www.avontuura.com/tag/copenhagen/\)](https://www.avontuura.com/tag/copenhagen/)
- [Daniel Libeskind \(https://www.avontuura.com/tag/daniel-libeskind/\)](https://www.avontuura.com/tag/daniel-libeskind/)
- [David Chipperfield \(https://www.avontuura.com/tag/david-chipperfield/\)](https://www.avontuura.com/tag/david-chipperfield/)
- [Foster + Partners \(https://www.avontuura.com/tag/foster-partners/\)](https://www.avontuura.com/tag/foster-partners/)
- [Frank Gehry \(https://www.avontuura.com/tag/frank-gehry/\)](https://www.avontuura.com/tag/frank-gehry/)
- [Frank Lloyd Wright \(https://www.avontuura.com/tag/frank-lloyd-wright/\)](https://www.avontuura.com/tag/frank-lloyd-wright/)
- [Herzog & De Meuron \(https://www.avontuura.com/tag/herzog-de-meuron/\)](https://www.avontuura.com/tag/herzog-de-meuron/)
- [hotel \(https://www.avontuura.com/tag/hotel/\)](https://www.avontuura.com/tag/hotel/)
- [house \(https://www.avontuura.com/tag/house/\)](https://www.avontuura.com/tag/house/)
- [I.M. Pei \(https://www.avontuura.com/tag/i-m-pei/\)](https://www.avontuura.com/tag/i-m-pei/)
- [Jean Nouvel \(https://www.avontuura.com/tag/jean-nouvel/\)](https://www.avontuura.com/tag/jean-nouvel/)
- [Le Corbusier \(https://www.avontuura.com/tag/le-corbusier/\)](https://www.avontuura.com/tag/le-corbusier/)
- [london \(https://www.avontuura.com/tag/london/\)](https://www.avontuura.com/tag/london/)
- [Mario Botta \(https://www.avontuura.com/tag/mario-botta/\)](https://www.avontuura.com/tag/mario-botta/)
- [Moshe Safdie \(https://www.avontuura.com/tag/moshe-safdie/\)](https://www.avontuura.com/tag/moshe-safdie/)
- [Museum \(https://www.avontuura.com/tag/museum/\)](https://www.avontuura.com/tag/museum/)
- [must-see \(https://www.avontuura.com/tag/must-see/\)](https://www.avontuura.com/tag/must-see/)
- [MVRDV \(https://www.avontuura.com/tag/mvrdv/\)](https://www.avontuura.com/tag/mvrdv/)
- [New York \(https://www.avontuura.com/tag/new-york/\)](https://www.avontuura.com/tag/new-york/)
- [norway \(https://www.avontuura.com/tag/norway/\)](https://www.avontuura.com/tag/norway/)
- [office \(https://www.avontuura.com/tag/office/\)](https://www.avontuura.com/tag/office/)
- [OMA \(https://www.avontuura.com/tag/oma/\)](https://www.avontuura.com/tag/oma/)
- [Oscar Niemeyer \(https://www.avontuura.com/tag/oscar-niemeyer/\)](https://www.avontuura.com/tag/oscar-niemeyer/)
- [Pavilion \(https://www.avontuura.com/tag/pavilion/\)](https://www.avontuura.com/tag/pavilion/)
- [Renzo Piano \(https://www.avontuura.com/tag/renzo-piano/\)](https://www.avontuura.com/tag/renzo-piano/)
- [Residential \(https://www.avontuura.com/tag/residential/\)](https://www.avontuura.com/tag/residential/)
- [Santiago Calatrava \(https://www.avontuura.com/tag/santiago-calatrava/\)](https://www.avontuura.com/tag/santiago-calatrava/)





© Iwan Baan



© Iwan Baan

The twisting, multifaceted shape of the building respects the existing distinctive tree-filled landscape. It responds to the slightly sloping north facing site with a split-level arrangement of the floors. The reception hall connects the mezzanine sections of the building and forms the hub of the complex.

- Schmidt Hammer Lassen  
(<https://www.avontuura.com/tag/schmidt-hammer-lassen/>)
- shanghai (<https://www.avontuura.com/tag/shanghai/>)
- Single Family House  
(<https://www.avontuura.com/tag/single-family-house/>)
- Snohetta (<https://www.avontuura.com/tag/snohetta/>)
- SOM (<https://www.avontuura.com/tag/som/>)
- Steven Holl (<https://www.avontuura.com/tag/steven-holl/>)
- switzerland (<https://www.avontuura.com/tag/switzerland/>)
- the netherlands (<https://www.avontuura.com/tag/the-netherlands/>)
- toronto (<https://www.avontuura.com/tag/toronto/>)
- travel (<https://www.avontuura.com/tag/travel/>)
- UNStudio (<https://www.avontuura.com/tag/unstudio/>)
- Zaha Hadid (<https://www.avontuura.com/tag/zaha-hadid/>)

#### TRAVEL INSPIRATION



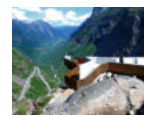
Old Meets New in Rooms Hotel Kazbegi: Georgia's Best Kept Secret  
(<https://www.avontuura.com/old-meets-new-rooms-hotel-kazbegi/>)  
February 27, 2018



The Real Game of Thrones Places You Can Visit  
(<https://www.avontuura.com/real-places-behind-game-thrones/>)



An Architect's Guide to Spa-Hopping Through Chile  
(<https://www.avontuura.com/spa-hopping-chile/>)

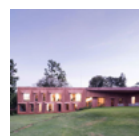
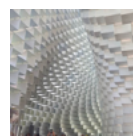


A Guide to Norway's Stunning Lookouts  
(<https://www.avontuura.com/guide-to-lookouts-in-norway/>)



How to See Angkor Wat in a Day  
(<https://www.avontuura.com/how-to-see-angkor-wat-in-a-day/>)  
May 17, 2017

#### INSTAGRAM



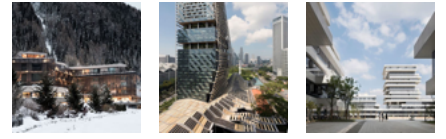


© Iwan Baan

(//instagram.com/Avontuura) (//instagram.com/Avontuura)



(//instagram.com/Avontuura) (//instagram.com/Avontuura)



(//instagram.com/Avontuura) (//instagram.com/Avontuura)

Follow Along! (//instagram.com/avontuura)

SOCIAL MEDIA

[f](#)
[@](#)
  
 (http://www.avontuura.com/
   
 modal=...



© Iwan Baan

The East African countryside is reflected in the individual character of the building, particularly in the red-brown pigmentation of the exposed concrete of the outer façade and perimeter wall. Thus, the building takes on the colour of the so-called „coffee soil“, the earth found throughout Kenya’s capital, which owes its rich red hue to the high iron content. The generously dimensioned windows are another striking feature, framed with geometrical projections that provide shade on the façade. The glass surfaces reflect the vegetation and make the building itself a part of the landscape.





© Fabio Idini



© Fabio Idini



© Iwan Baan